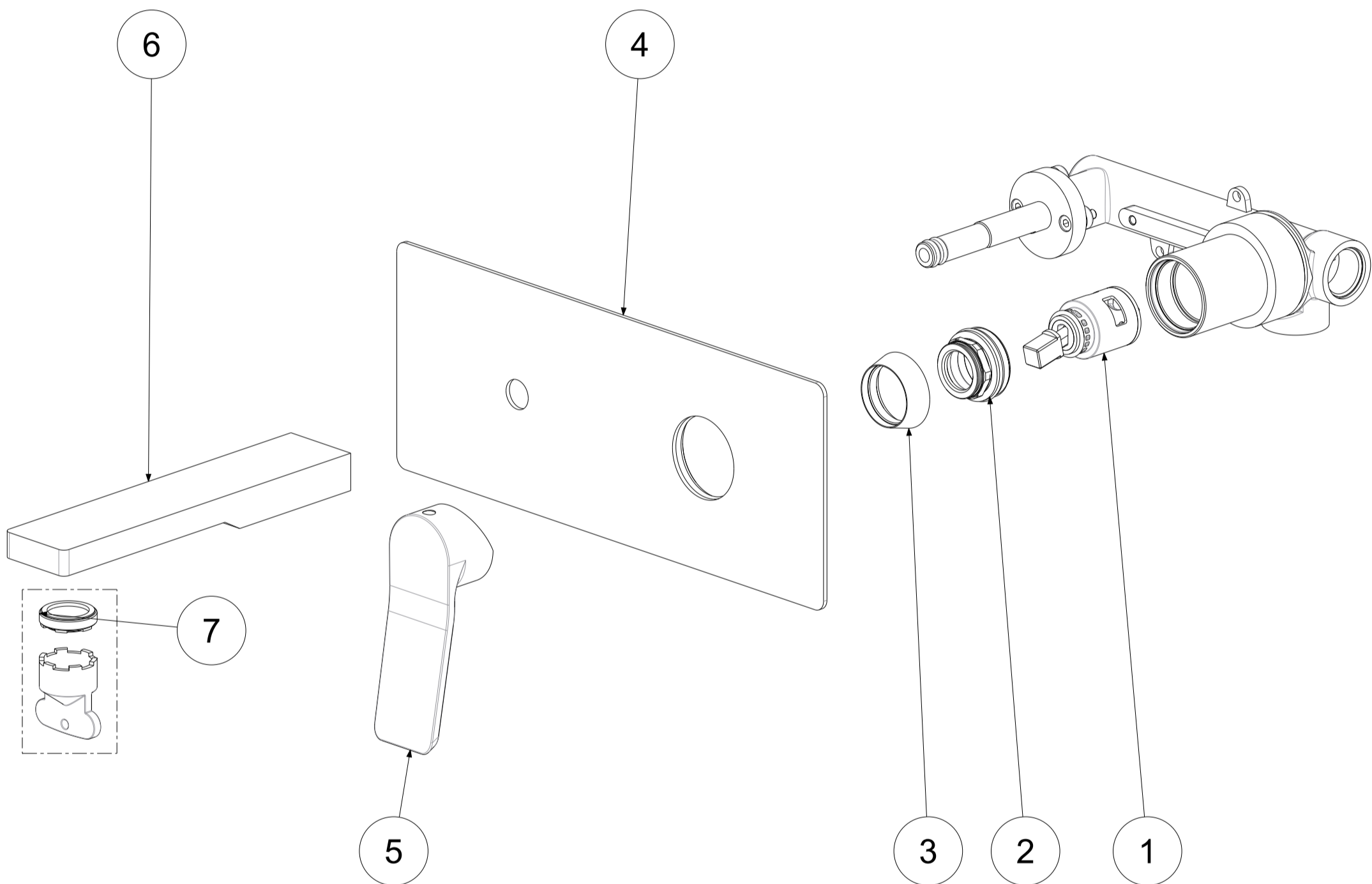
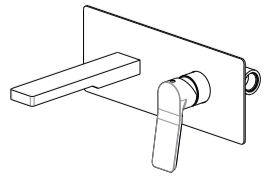
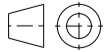



| P<br>Item | CODICE<br>Code | DESCRIZIONE<br>Designation                     |
|-----------|----------------|--|
| 1         | ZA91231        | Cartuccia completa Ø25mm                       |
| 2         | ZGHI030..      | Ghiera fermacartuccia (NUOVA) M30x1            |
| 3         | ZCAP062..      | Cappuccio sottoleva in metallo                 |
| 4         | ZPIA110..      | Piastra in acciaio inox 2 fori con guarnizioni |
| 5         | ZLEV210..      | Leva completa lavabo incasso TILT              |
| 6         | ZBOC110..      | Bocca con aeratore l.150mm                     |
| 7         | ZAER090        | Aeratore M24x1 SLIM AIR con chiavetta          |



|  |  |          |            |   |                |                |                       |      |
|--|--|----------|------------|---|----------------|----------------|-----------------------|------|
|   | APPROVATO:<br>Approved:  |          |            | <b>A3</b>   | SCALA<br>Scale | 0,500          | MATERIALE<br>Material | VARI |
|  | DISEGNATO:<br>Design:  | Giampani | 12/12/2020 |  | UNITA'<br>Unit | mm             | SERIE<br>Range        | TILT |
|  | DESCRIZIONE - Description:   |          |            |   |                |                |                       |      |
|  | Miscelatore incasso 2 Fori c/Piastra rettangolare e bocca mm.150<br>Concealed single lever basin mixer with spout and aerator l. 150mm |          |            |   |                |                |                       |      |
| FOGLIO - Sheet:  |  | Ricambi  |            | CODICE - Part Number:   |                | <b>T1104CR</b> |                       |      |