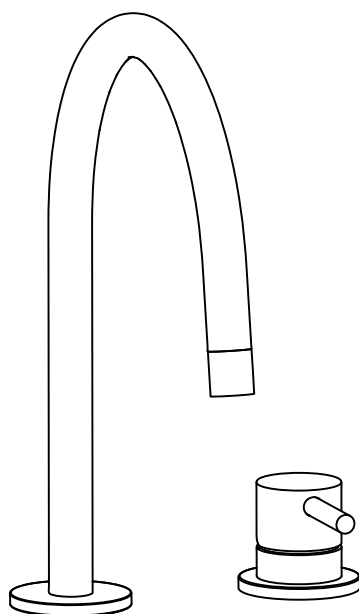


LIGHT JO JOKER JOLLY

051..



IST305
Rev.2025.01



ITALIANO



- L'installazione deve essere eseguita in conformità alle presenti istruzioni, alle norme edilizie e di sicurezza vigenti e a quelle relative agli impianti idraulici.
- Controllare il prodotto installato ad intervalli regolari per assicurarsi che non ci siano perdite o parti instabili.
- Tenere fuori dalla portata dei bambini. Alcune piccole componenti potrebbero essere ingerite.

ENGLISH

- The installation must be carried out in compliance with current manual, building and safety regulations, as well as with the applicable plumbing standards. All required safety precautions must be observed.
- Periodically inspect the installed product to ensure there are no leaks or unstable parts, and take immediate action if any irregularities are detected.
- Keep out of reach of children. Small pieces that can be a choking hazard for young children.



Gestione imballaggi
inquadrare il QR code

Packaging disposal
scan the QR code

In caso di necessità contattare /
In case of need contact:

Rubinetteria Paffoni S.p.A.
Via Soriso,2
28076 - Pogno (NO)
Tel. +39 0322 97321/2
email: ufficio.tecnico@paffoni.it

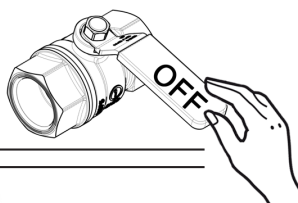
1

Montaggio Assembly

EN1717

Prima di chiudere
il muro eseguire lo
spurgo e la prova di
pressione

Before concluding the
wall finishing operation
make purge and
pressure test



$65 \pm 5^{\circ}\text{C}$



$15 \pm 5^{\circ}\text{C}$



MIN - MAX

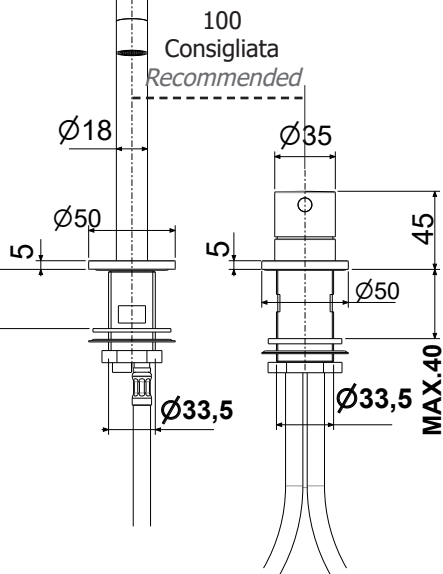


OK

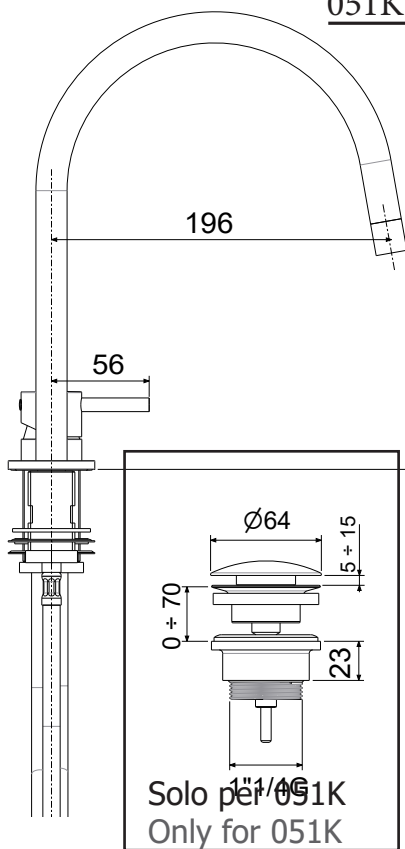
2

264

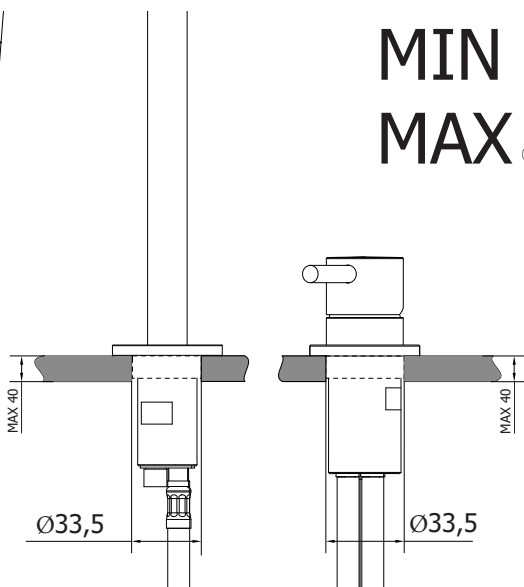
MAX.40



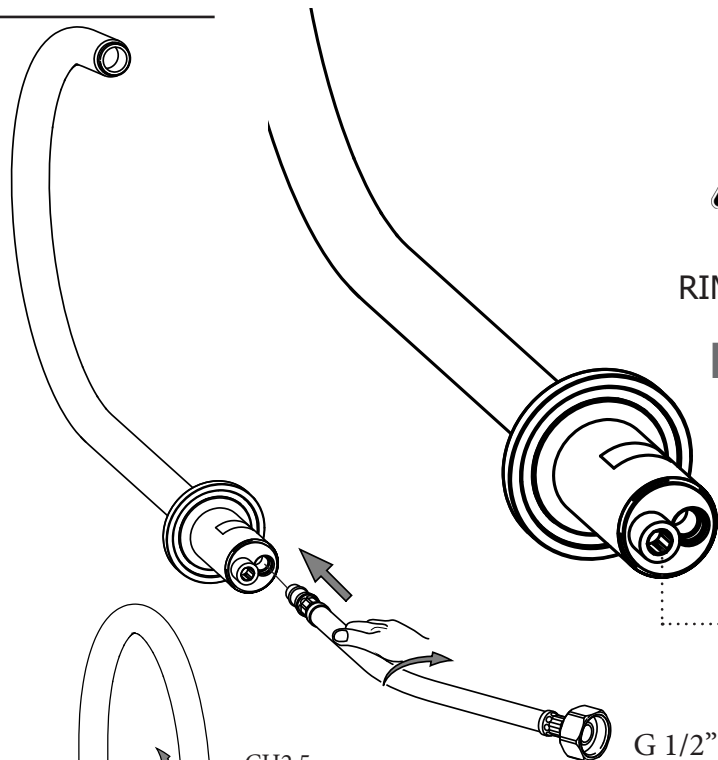
051
051K



MIN
MAX

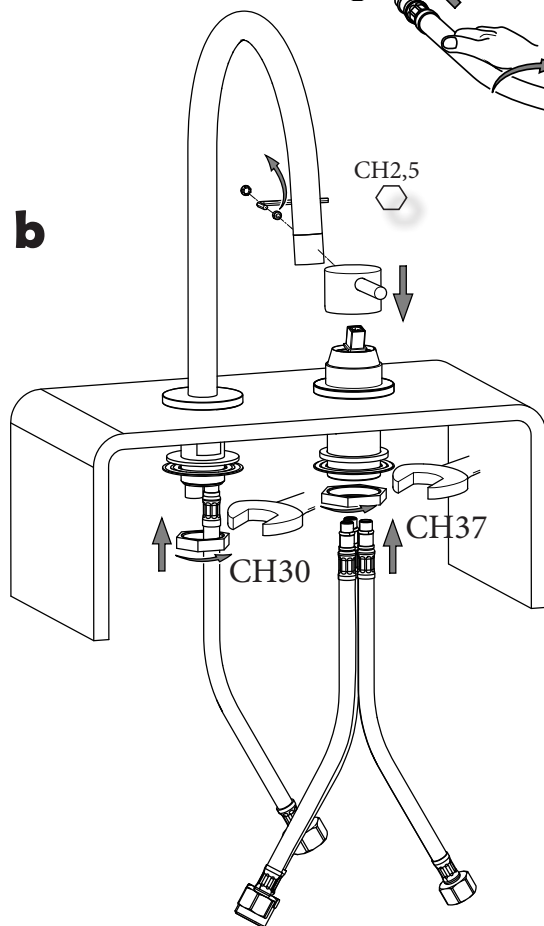


a

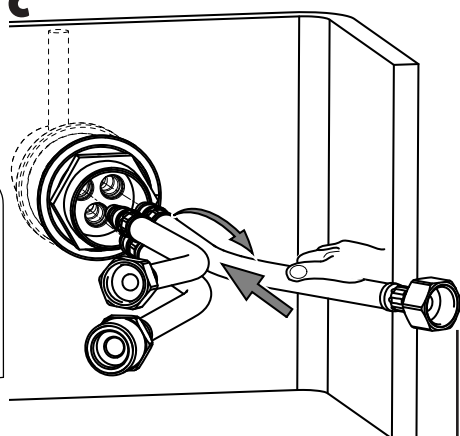


NON
RIMUOVERE
IL TAPPO
DON'T
REMOVE
PLUG

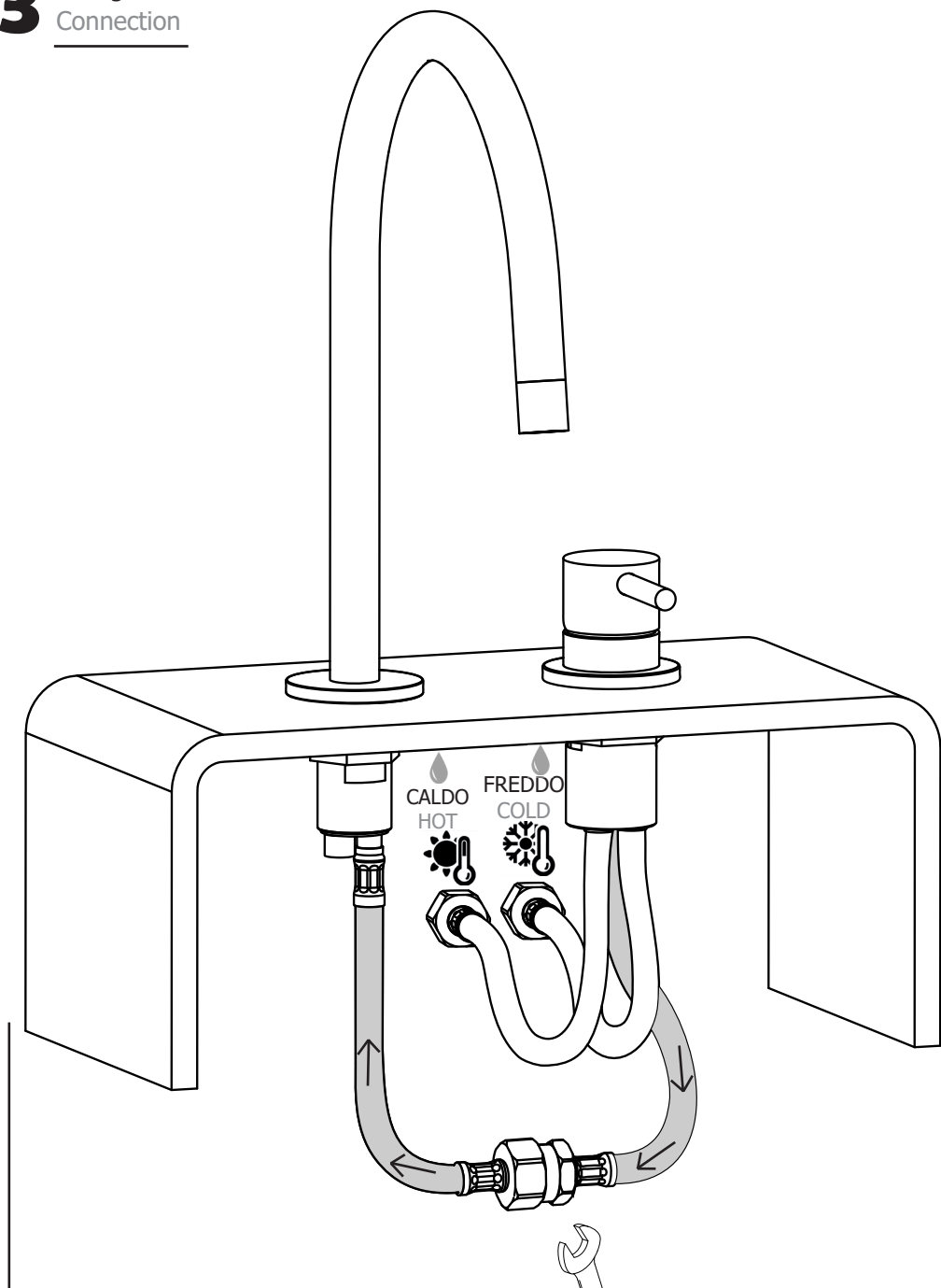
b



c

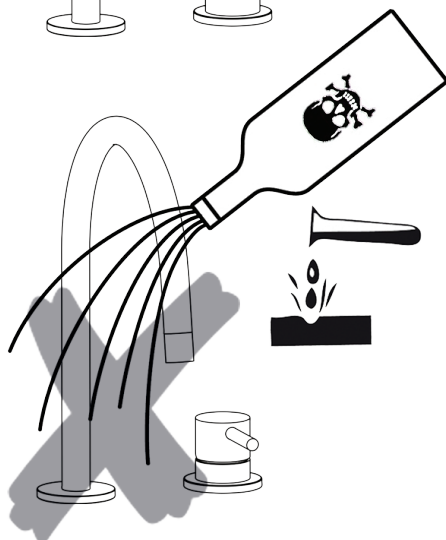
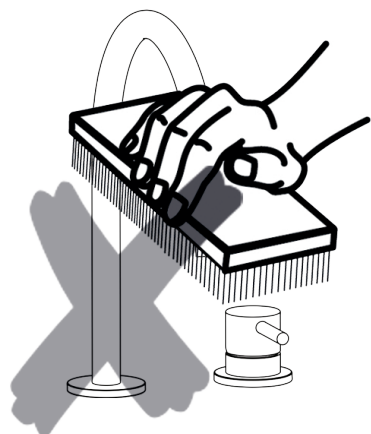
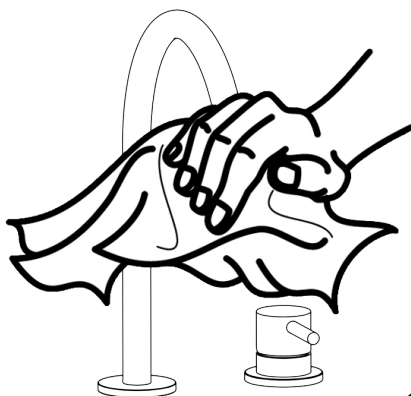
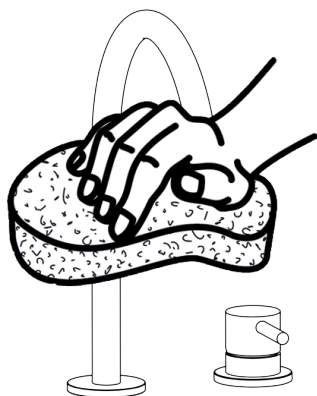
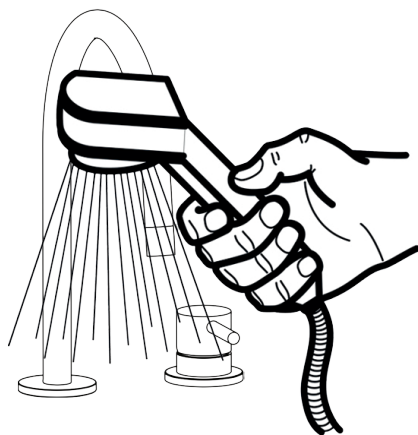
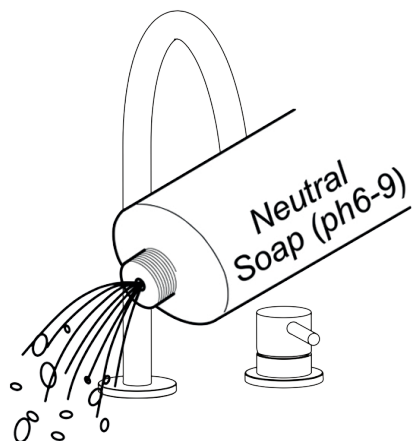


3 Collegamenti Connection



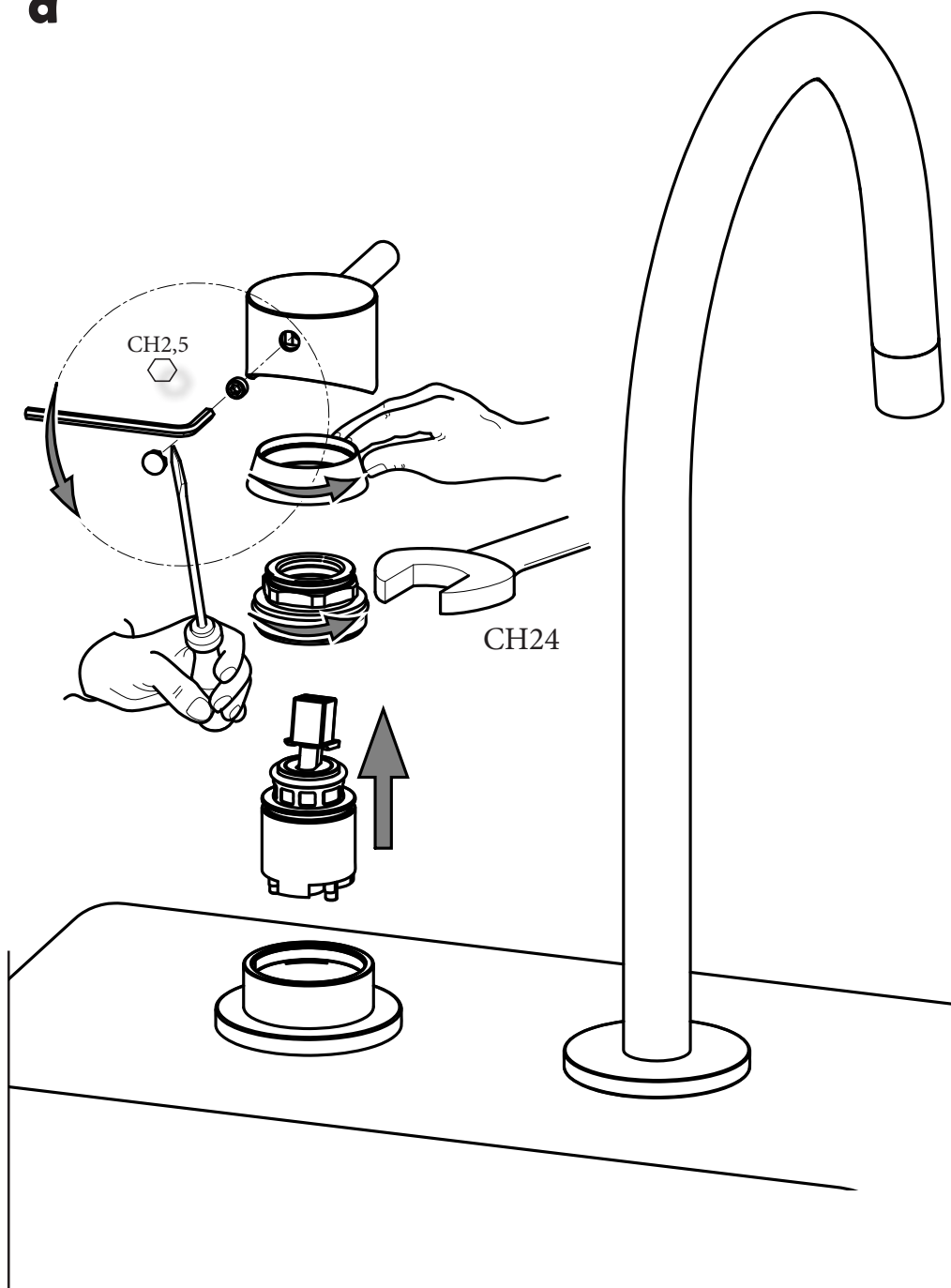
M

Manutenzione
Service





Sostituzione Cartuccia How to replace Cartridge



b Sostituzione Aeratore
How to replace Aerator

